



**AMTEK**  
**INSTRUMENTS PVT. LTD.**

Your Automation Partner





## ABOUT US

Our team is distinguished by their functional and technical expertise combined with their hands-on experience which helps our customers to grow their business by being affordable, sustainable, and efficient in their offering.

## OUR STRENGTH



Mitsubishi Electric has a vast range of automation and processing technologies including controllers, drives, power distribution and control products & industrial robots. Mitsubishi Electric helps to bring higher productivity and quality to the factory floor. In addition our extensive service networks around the globe provide direct communication and comprehensive support to customers.

## PROGRAMMABLE CONTROLLER

Simple Application PLC Controller from 6/4 IO up to 8000 IO Capacity, Networking Communication Solution, Safety Solution.



MELSEC Q SERIES



MELSEC iQ-F SERIES



MELSEC iQ-R

## AC DRIVES



0.5 HP up to 1000 HP; 1 Phase 220 VAC, 3 Phase 220 VAC, and 3 Phase 440 AC supply variant; application-specific products like Crane, Winder-Rewinder, Hazardous Area Applications, Shipping-Marine Applications.

- FR-A800
- FR-A800 PLUS
- FR-E800
- FR-E700
- FR-D700
- FR-CS80

## AC SERVOS & MOTION CONTROLLERS

- Motion module allows you to pursuit of high speed, multi-axis communication system works as synchronous control system, absolute-position system, linear and circular interpolation.
- AC Servo Drive and Servo Motor product range: 100 watt to 220 kw, 1 Phase and 3 Phase 220 VAC; 3 Phase 415 VAC variants.



SERVO MOTORS  
& SERVO DRIVES



MOTION  
CONTROLLER

## PLC + HMI, HMI & IPC

- All in one PLC with HMI for small scale applications with special features like Ethernet Communication, In-built Push Button with LED Indications, Data Logging, In-built Analog, PID Function.
- 3.8" to 15" HMI with data logging, 21CFR part compliance



GOT



PLC+HMI GOC



ALPHA CONTROLLER



INDUSTRIAL PC (Size 15" and 21.5")

## e-F@ctory

- e-F@ctory creates Smart Factories by leveraging advanced digital technologies to achieve digital transformation in the manufacturing environment for Enhanced Operational efficiency.
- Seamless Integration Of Plant Operations.
- Bulk Data Collection and Management, Data Analyses.
- Data Diagnostic and Historian.
- iQ Edgecross
- iQ Monozukuri
- GENESIS64 SCADA – Iconics



## ROBOTS

- Vertical-Horizontal type Robots
- Collaborative Robots.



## LOW VOLTAGE SWITCHGEARS

LVS products such as MCB, MCCB, AC & DC Contactor, MPCB, Distribution Box, Energy Meter, and Accessories.







Phoenix Contact is the specialist and innovative market leader in industrial connection technology, automation solution, electronic Interface systems and surge protection.

## AUTOMATE

- CLOUD COMPUTING
- EDGE COMPUTING
- HMI & IPC
- INDUSTRIAL COMMUNICATION
- PLC & I/O
- SOFTWARE SOLUTIONS



## POWER SUPPLY, CHARGE & PROTECT

- CHARGING TECHNOLOGY FOR E-MOBILITY
- DC TO DC CONVERTERS
- DEVICE CIRCUIT BREAKERS
- POWER SUPPLIES & REDUNDANCY MODULES / DC UPS
- PROTECTIVE RELAYS & EMF FILTERS
- SURGE PROTECTION



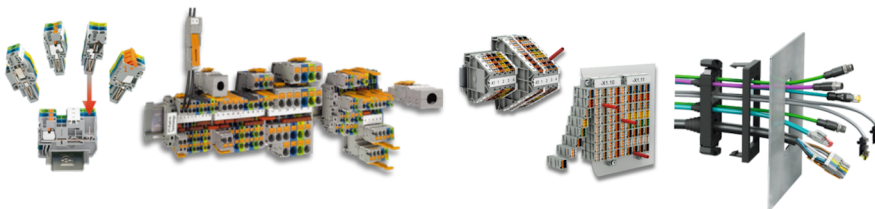
## SWITCH, MEASURE & MONITORS

- RELAYS & OPTOCOUPLERS
- MOTOR STARTERS
- I/O SIGNAL MARSHALLING
- SIGNAL CONDITIONERS & TRANSDUCERS



## CONNECTION TECHNOLOGY

- TERMINAL BLOCKS
- DISTRIBUTION TERMINAL BLOCKS
- CONNECTORS
- ADAPTER & CONDUCTOR CONNECTORS
- BOARD TO BOARD CONNECTORS
- PCB TERMINALS & CONNECTORS
- PATCH CORDS & SENSOR CABLES
- SYSTEM CABLING FOR CONTROLLERS



## PRINTING & MARKING SOLUTIONS

- PRINTERS
- MARKING MATERIALS
- TOOLS





## FACTORY AUTOMATION

### PROXIMITY SENSORS

- INDUCTIVE SENSORS
- CAPACITIVE SENSORS
- MAGNETIC FIELD SENSORS



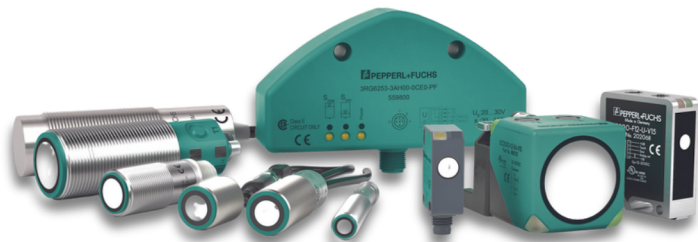
### PHOTOELECTRIC & SAFETY SENSORS

- THRU-BEAM/ RETROREFLECTIVE/ DIFFUSE MODE SENSORS
- FIBER OPTIC
- SLOT AND SLOT GRID SENSORS
- CONTRAST SENSORS+COLOR SENSORS
- LIGHT GRIDS & SAFETY SENSORS



### ULTRASONIC SENSORS

- THRU-BEAM SENSORS
- DIFFUSE AND RETROREFLECTIVE MODE SENSORS
- DOUBLE SHEET SENSORS
- ULTRASONIC SENSOR ACCESSORIES



### ROTARY ENCODERS

- ABSOLUTE ROTARY ENCODERS
- INCREMENTAL ROTARY ENCODERS
- CABLE PULLS
- ROTARY ENCODER ACCESSORIES



### INDUSTRIAL VISION, IDENTIFICATION & POSITIONING SYSTEMS

- VISION SOLUTION
- LASER PROFILE & DISTANCE SENSORS
- RFID & OPTICAL IDENTIFICATION
- INDUCTIVE POSITIONING SYSTEMS (PMI)
- OPTICAL LINEAR POSITIONING (WCS)
- CAMERA-BASED TRACK GUIDANCE (PGV)



### INDUSTRIAL COMMUNICATION & WIRELESS SOLUTION

- AS-INTERFACE
- IO-LINK
- SIGNAL CONVERTERS & SWITCH AMPLIFIERS
- INDUSTRIAL ETHERNET

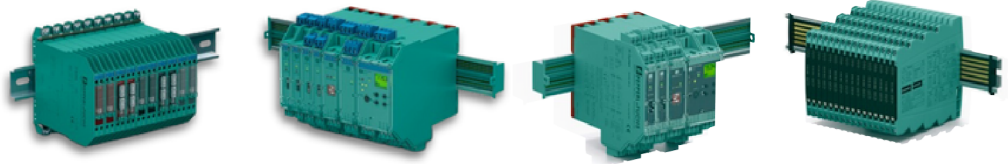




## PROCESS AUTOMATION

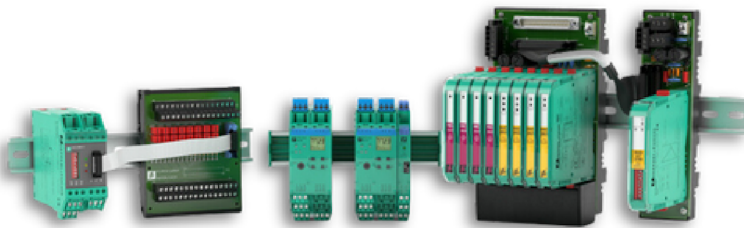
### INTRINSIC SAFETY BARRIER / SIGNAL CONDITIONER

- ISOLATED BARRIERS
- ZENER BARRIERS
- SIGNAL CONDITIONER



### HART INTERFACE SOLUTIONS

- K-SYSTEM HIS
- H-SYSTEM HIS
- ACCESSORIES



### PURGE AND PRESSURIZATION SYSTEMS

- TYPE X / Y / Z
- Ex pxb / Ex pyb / Ex pzc
- ENVIRO-LINE



### FIELDCONNEX ETHERNET-APL AND FIELDBUS INFRASTRUCTURE

- ETHERNET APL
- FOUNDATION FIELDBUS H1
- PROFIBUS PA
- ADVANCED DIAGNOSTICS
- ETHERNET



### INDUSTRIAL MONITORS / HMI / REMOTE I/O SOLUTIONS

- INDUSTRIAL MONITORS
- INDUSTRIAL BOX THIN CLIENTS AND PC
- THIN CLIENT SOFTWARE
- REMOTE I/O FOR ZONE1 & ZONE2



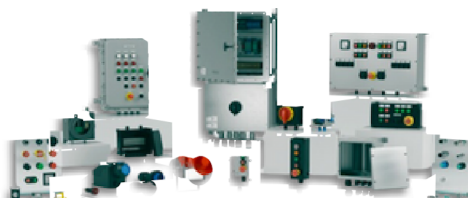
### MOBILE COMPUTING AND COMMUNICATION



- LEVEL MEASUREMENT



### ELECTRICAL EXPLOSION PROTECTION EQUIPMENT



### POWER SUPPLIES



### SURGE PROTECTION







## Rittal - The System

RITTAL is a world pioneer manufacturer of Industrial enclosures, Industrial Climate Solutions and Power distribution modular system.

### ENCLOSURES

- SMALL ENCLOSURES SIZES FROM 150 X 150 X 80MM TO 1000 X 1400 X 400 MM (WXHxD).
- LARGE ENCLOSURE : STRUCTURED WITH 9 FOLDS & 16 FOLDS FOR BETTER STRENGTH
- COMMAND PANEL & SUPPORT ARM SYSTEMS
- CONSOLE SYSTEMS
- STAINLESS STEEL ENCLOSURE & SOLUTIONS FOR VARIOUS INDUSTRIAL SEGMENTS.
- ENCLOSURES FOR OUTDOOR APPLICATION WITH CANOPY & CUSTOMIZATION.



### POWER DISTRIBUTION ENCLOSURES

- POWER DISTRIBUTION: COMPARTMENT ENCLOSURE FOR MCC & PCC PANELS.
- MODULAR SYSTEM FOR LOW-VOLTAGE SWITCH-GEAR UP TO 5500 A WITH DESIGN VERIFICATION TO IEC 61 439-1/-2 AND DIN EN 61 439-1/-2.
- BUS BAR SYSTEMS FOR SWITCHING SWITCHGEARS AND & CONTROL GEARS UP TO 1600 A.



### CLIMATE CONTROL



- ROOF- AND WALL-MOUNTED COOLING UNITS
- CHILLERS
- AIR/AIR, AIR/WATER, HEAT EXCHANGE
- FAN-FILTERS SYSTEMS
- ENCLOSURE HEATERS



OMRON is an industrial automation partner that creates, sells and services fully integrated automation solutions that include sensing, control, safety, vision, motion, robotics and more.

## SENSING SOLUTIONS

- PROXIMITY SENSORS
- PHOTOELECTRIC SENSORS
- ROTARY ENCODERS
- LASER SENSORS
- FIBER OPTICS



## INDUSTRIAL COMPONENTS



- GENERAL PURPOSE RELAYS
- SAFETY RELAYS
- I/O RELAY TERMINALS
- SOLID-STATE RELAYS
- LIMIT SWITCHES
- SWITCH MODE POWER SUPPLY (SMPS)
- TEMPERATURE CONTROLLERS/TIMERS/COUNTERS
- CAM POSITIONERS

## AUTOMATION SYSTEMS

- HUMAN MACHINES INTERFERENCE (HMI) & IPC
- MOTION CONTROLLER MULTI-AXIS
- PROGRAMMABLE LOGICAL CONTROLLERS
- SERVO MOTORS & SERVO AMPLIFIER



## SAFETY COMPONENTS & VISION SYSTEMS



- 3D ROBOT VISION SYSTEM
- AI BASED SMART CAMERA
- PC VISION SYSTEM
- LIGHTING & LENS
- CODE READERS & OCR

## ROBOTICS

- COLLABORATIVE ROBOTS
- MOBILE ROBOTS
- INDUSTRIAL ROBOTS
- AUTO GUIDED VEHICLE (AGV)







# LAPP

LAPP Group is a leading supplier of integrated solutions and branded products in the field of cable and connection technology. Pioneer in introducing the concept of reliably connecting the world with unbeatable range of cabling products and solutions.

## OLFLEX - POWER & CONTROLS CABLES

- CONTROL CABINET SINGLE CORE
- SERVO APPLICATION
- POWER CHAIN APPLICATION
- ROBOTICS APPLICATION
- CONVEYOR TECHNOLOGY



## UNITRONIC - DATA COMMUNICATION SYSTEM

- LOW-FREQUENCY DATA TRANSMISSION CABLES
- CO-AXIAL CABLES
- SENSORS/ACTUATORS CABLING
- BUS SYSTEM WITH RS 485/RS 422, PROFIBUS /CAN DEVICE NET/CC-LINK/AS-INTERFACE



## ETHERLINE- DATA COMMUNICATION SYSTEM FOR ETHERNET TECHNOLOGY

- INDUSTRIAL ETHERNET CAT5/ 5E/CAT6/CAT6A/CAT7
- INDUSTRIAL ETHERNET ACCESSORIES
- PROFINET CAT5E/CAT6/CAT6A/CAT7/CAT7A



## HITRONIC- OPTICAL TRANSMISSION SYSTEM

- POLYMER OPTICAL FIBRES (POF),
- POLYMER CLADDED FIBRES AND
- OPTICAL GLASS FIBRES (GOF) SINGLE & MULTIMODE.
- OPTICAL FIBER CONNECTORS & ADAPTORS



## SKINTOP-CABLE GLANDS & ACCESSORIES

- PLASTIC/METAL /NICKLE BRASS COATED /SS
- MATRIX/PG/NPT THREAD



## EPIC-INDUSTRIAL CONNECTORS

- RECTANGLE CONNECTORS
- CIRCULAR CONNECTORS
- SOLAR CONNECTORS



## SILVYN-PROTECTIVE CABLE CONDUITS SYSTEMS & CABLE CARRIER SYSTEMS

- PLASTIC PROTECTIVE CABLE CONDUITS
- METAL PROTECTIVE CABLE CONDUITS
- LIQUID-TIGHT CONDUITS
- PROTECTIVE CONDUITS FOR SPECIAL APPLICATION(HEAT PROTECTION, FOOD & BEVERAGE)
- CONDUIT ACCESSORIES



**TOSIBOX**  
Simplifying IT

Tosibox gives Secure Remote Access to industrial components like PLC, HMI etc. The unique feature of TOSIBOX® technology is VPN-based two-way connectivity that brings the benefits of IP networking plus remote maintenance.

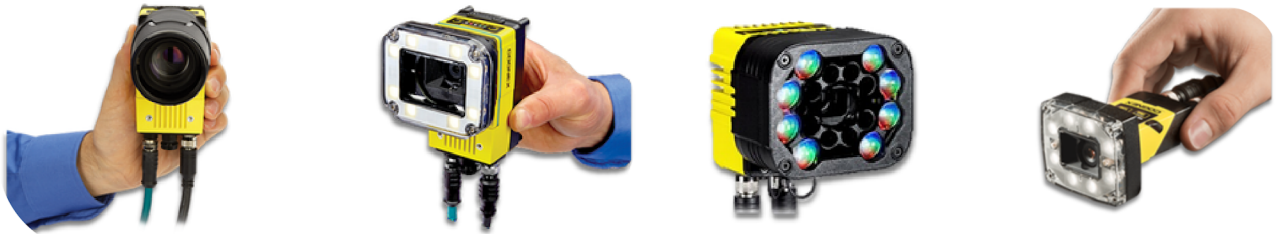


**COGNEX**

Cognex Corporation is the leading solution provider of machine vision systems, vision software, and industrial barcode readers for manufacturing automation. They provide enhanced vision inspection systems that improve the accuracy, and quality of products; and reduce downtime and service complaints. Based in the USA, Cognex offers AI technology-based machine vision solutions like Deep learning and Edge learning technology; 2D & 3D Vision; Handheld and Fixed Barcode Readers, and barcode verifiers.

## 2D VISION SENSORS AND SYSTEMS

High resolution, suitable for high-speed applications, OCR, dimensional measurement, line scan and area scan, color, and monochrome, manual and autofocus, supports different types of communications data storage, data transfer

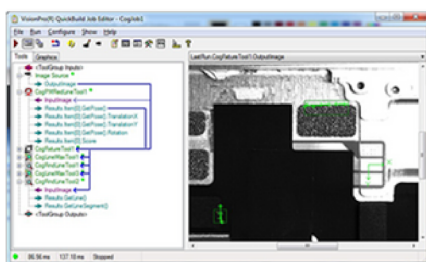


## 3D VISION SYSTEMS

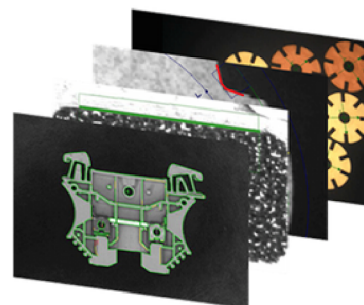
Beyond the capabilities of 2D Vision Technology, high accuracy surface measurement, robot 3D vision tools, 3D laser displacement technology, up to 1.5 million points 3D resolution.



## VISION SOFTWARE



DEEP LEARNING TECHNOLOGY



VISION PRO SOFTWARE AND COGNEX DESIGNER

## BARCODE READERS



• FIXED MOUNT

• HANDHELD

• BARCODE VERIFIERS





Radix is the leading Indian manufacturer of process control instrumentation products, serving industries such as pharmaceutical, food, chemical, steel, automotive, defense, etc.

- TEMPERATURE CONTROLLERS / TRANSMITTERS / SCANNER
- SIGNAL ISOLATORS
- CLEAN ROOM INDICATORS
- RH, T, DP TRANSMITTERS
- GPS MASTER-SLAVE CLOCKS
- DOOR INTERLOCK SYSTEM
- FLAMEPROOF INSTRUMENTS
- TEMPERATURE SENSORS
- LEVEL SENSORS AND TRANSMITTERS
- DIFFERENTIAL PRESSURE SENSORS AND TRANSMITTERS
- HUMIDITY SENSORS AND TRANSMITTERS
- PRESSURE / TEMPERATURE GAUGES

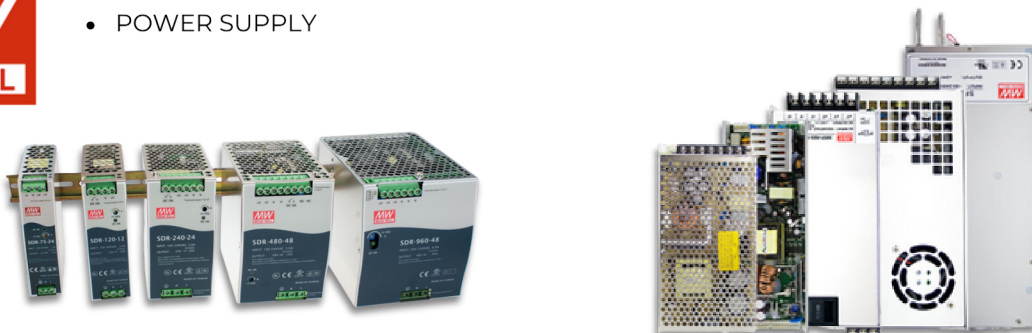


**MTL products**, part of Eaton's Crouse-Hinds series portfolio, stand for safety in the harshest of environments. With over 40 years experience within the process industry, Eaton's MTL product range is designed and manufactured with you in mind. Starting with the MTL100 zener barrier to comprehensive portfolio of solutions for high-consequence harsh and hazardous environments has grown and gained customer recognition worldwide.

- SIGNAL CONDITIONING / INTRINSIC SAFETY
- LOOP POWER INDICATOR
- HART® INTERFACING
- FOUNDATION™ FIELDBUS SOLUTIONS
- INDUSTRIAL NETWORK SOLUTIONS
- SURGE PROTECTION SOLUTIONS
- PROCESS ALARM EQUIPMENT



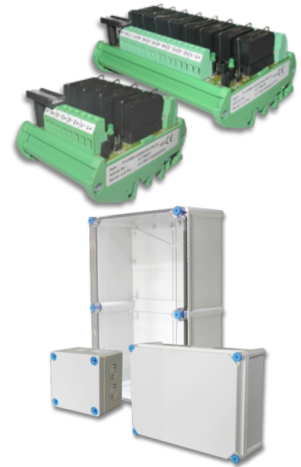
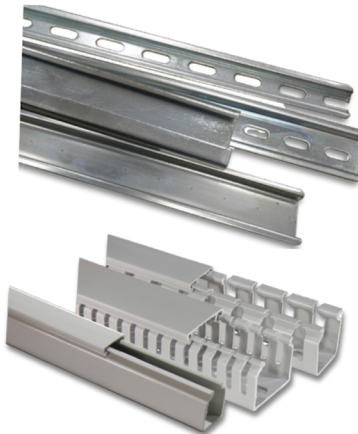
- POWER SUPPLY





Trinity Touch focuses on manufacturing various items used in control cabinet.

- DIN RAILS & WIRING DUCTS
- RELAY CARDS
- GLANDS & CONDUITS
- PLUG SOCKETS & TERMINALS
- TRIBOX



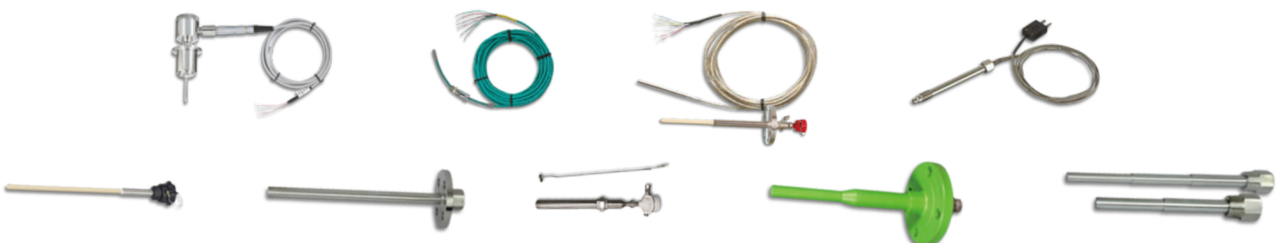
EAPL's differentiated innovations have changed the paradigms across a wide spectrum of industries. The EAPL products are designed as universal automation applications to capacitate high performance in a secure environment.

- ANNUNCIATORS
- COMBINATION TIMER
- DIGITAL TIMER
- ELECTRONIC TIMER
- ENERGY METER
- EV CHARGE CONTROLLER
- DIGITAL SEQUENTIAL TIMER
- MAXIMUM DEMAND CONTROLLER
- PHASE MONITORING DEVICE
- PUMP CONTROLLER
- SPPT
- TIME SWITCH



Techno is a leader in Temperature Sensing products for more than 27 years in industries like Power, Chemical, Process, Pharmaceutical, Cement, Metal, Nuclear etc.

- THERMO COUPLES- J,K,R,S,T
- RTD`S: PT 100, PT1000
- RTD WITH LOOP-WIRED TEMPERATURE TRANSMITTER
- TEMPERATURE BATH.
- THERMO WELLS







We are a leading Manufacturer of Power & Control Panels. We provide complete solution for automation and electric control panels. We follow the selection and design procedure as per IEC 61439 standards. We consult and provide panel cooling solution (AC).

## OUR PRODUCTS

- Automation Panel (PLC / SCADA PANELS)
- Panels for Energy Savings / VFD Control Panel
- MCC, PMCC, PDB, and APFC panels
- MLDB – Main Lighting Distribution Board
- Low Tension Panel - LT Panel
- DG Set Control Panel
- DCDB/ACDB for solar panels.
- BUS Duct - Cooper or Aluminium.
- DOL / STAR-DELTA / Panel
- Mimic And Desk Type (PC) Panel
- Turn Key Project Solution: SITC Work (Supply, Installation, Testing and Commissioning)

## INTELLIGENT AND NON-INTELLIGENT MOTOR CONTROL CENTRE (IMCC AND MCC)

- Maximum nominal current to 5000A, maximum fault current up to 65KA.
- Operation, control and protection of motor.
- MCC is to provide a compact, modular grouping for motor control and electrical distribution components.
- Intelligent communication with PLC, DCS and BMS.



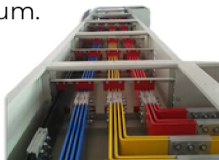
## APFC PANELS (AUTOMATIC POWER FACTOR CONTROL)



- Panels are used to improve the power factor of an electrical system by switching on and off the required capacitor bank units automatically.
- 600/800kvar panel, Fault current 64KA

## BUS-DUCT PANEL

- Up to current 5000A, Fault current 65KA  
Copper or Aluminium.



## PLC & DRIVE CONTROL PANEL



## SITC WORK

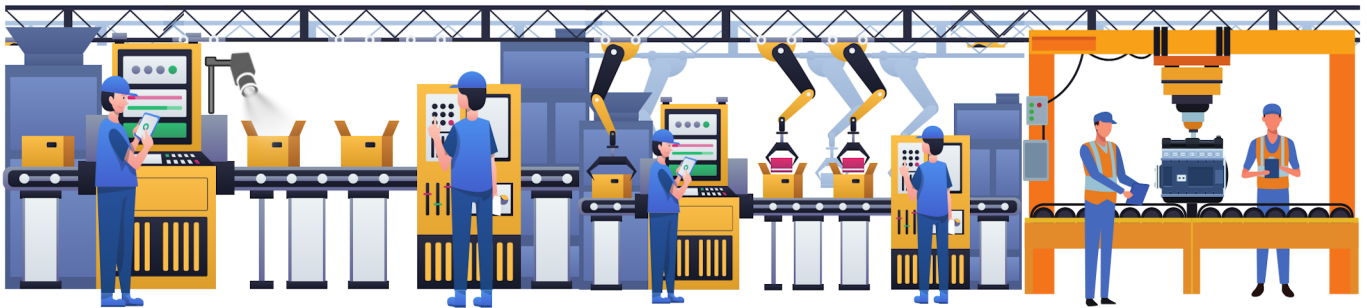
- Instrumentation cable, control & Power supply cable.
- Cable laying, Installation, Termination and Testing.



As Amtek we provide Factory Automation Solutions. With the Implementation of automation systems, we can enhance productivity by utilizing process data, OEE calculation, reporting & trending, dynamic graphical visualization, and user management. We provide IIoT and AI-based industrial automation solutions which is suitable for industrial digital transformation.

We work with Original Equipment Manufacturers, End users, and Panel Builders. Our solutions and services cater to a diverse range of industrial verticals such as Pharmaceuticals, Oil & Gas, Chemical, Plastic Processing, Packaging & Printing, Textile, Heat Treatment, Automobile, Food & Beverages, Machine Tools, Power, Ceramic & Renewable Energy. Regardless of industry, we have the expertise and resources to address unique needs effectively.

## Industrial Solutions under one roof.



### Automation

- PLC, HMI, VFD, Servo / Motion
- SCADA
- Machine Automation / Upgradation
- Robotics



### Vision Solution

- Machine Vision System
- Barcode Scanner
- 3D-2D vision inspection system
- Track and trace



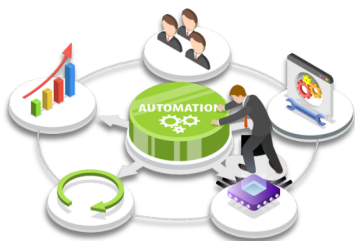
### Plant Integration

- Plant Integration / 21CFR Part Compliance
- L2 Integration
- Energy Monitoring System – EMS
- Industry 4.0 solution – IIoT
- Bulk data management



### Panel Manufacturing

- Panel manufacturing
- Turn key project solution



**Your Automation Partner**





# AMSOF

 Your Partner In Digital Transformation

## Why AMSOF?

AMSOF offers tailored Software solutions for today's diverse business challenges. Its versatile platform seamlessly integrates workflow, delivering customized regulatory compliance and data-driven insights, serving industries' needs.



## Attributes & Functionality

### Tailored Solution

Customized Dashboard, Reports, Charts, Visualization.

### Intelligent Asset Optimization

Improve asset performance and reduce down time using real time data.

### Audit Trail

Easily log and track user actions for accountability.

### Web View Access

Access from any device through the web interface.

### Robust User Management

Utilizes encryption and secure authentication.

### Data Analytics

Gain actionable insights for smarter choices.

### Enhanced Connectivity

Experience enhanced connectivity with different protocols.

### Enhanced Efficiency

Integrates into existing processes, reducing manual efforts.

## Application for change to Comprehensive solutions for digital transformation.



Energy Monitoring System



Utility Management



Facility Management



Production Monitoring



Predictive Maintenance & Plant Safety

## Experience AMSOF Today

Request a demo to explore how AMSOF innovates data management, streamlines processes, and ensures compliance.

Embrace The Future With Confidence.  
**Embrace AMSOF.**



## Our Services

Machine  
Automation



Industry 4.0  
MES / IIoT



SITC / Turn Key  
Projects



SPM / Wireless  
Gate Ways



Control Panel  
Maufacturing



Sensing & Cabling  
Solution



Energy Monitoring  
System



Robotics



Plant Automation  
& SCADA System



Vision Inspection System  
& Bar Code Scanner



## Industries We Serve



Pharma



Plastic



Green Energy



Ceramic



F&B



HVAC



Furnace



Oil & Gas



Fire & Safety



Water



Automobile



Vision

## Authorized For



ISO 9001:2015 CERTIFIED COMPANY

MSME UDYAM NO : UDYAM-GJ-01-0011784

GST NO.: 24AAHCA1725C1ZB

## AMTEK INSTRUMENTS PVT. LTD.

📍 205-206, Samaan-II Complex, Anandnagar,  
Pralhad nagar Road, Ahmedabad-15.

☎ 9825010569 | 9328810569

✉ amtek@amtekinstruments.com | ketan@amtekinstruments.com

🌐 www.amtekinstruments.com

